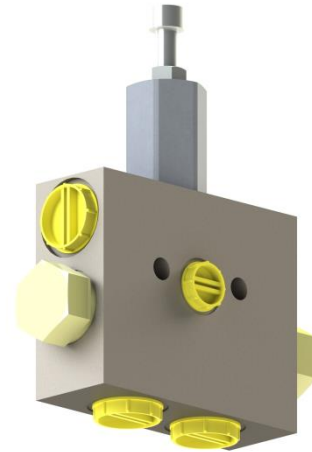


# BIDIRECTIONAL FLUSHING VALVE

- Up to 500 bar (7255 psi)
- Exchange flow 60 l/min (15.85 gpm)
- Threaded connections:
  - ISO 1179 (BSPP/Gas)
  - ISO 11926 (UNF)
- Surface treatment:
  - Phosphating

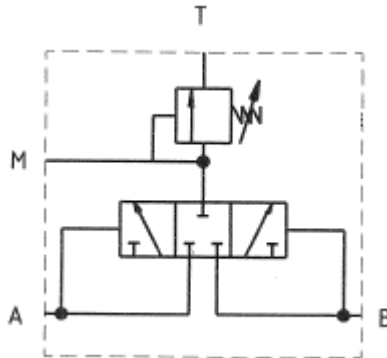


*Specifications are subject to change without notice.*

## ▷ DESCRIPTION

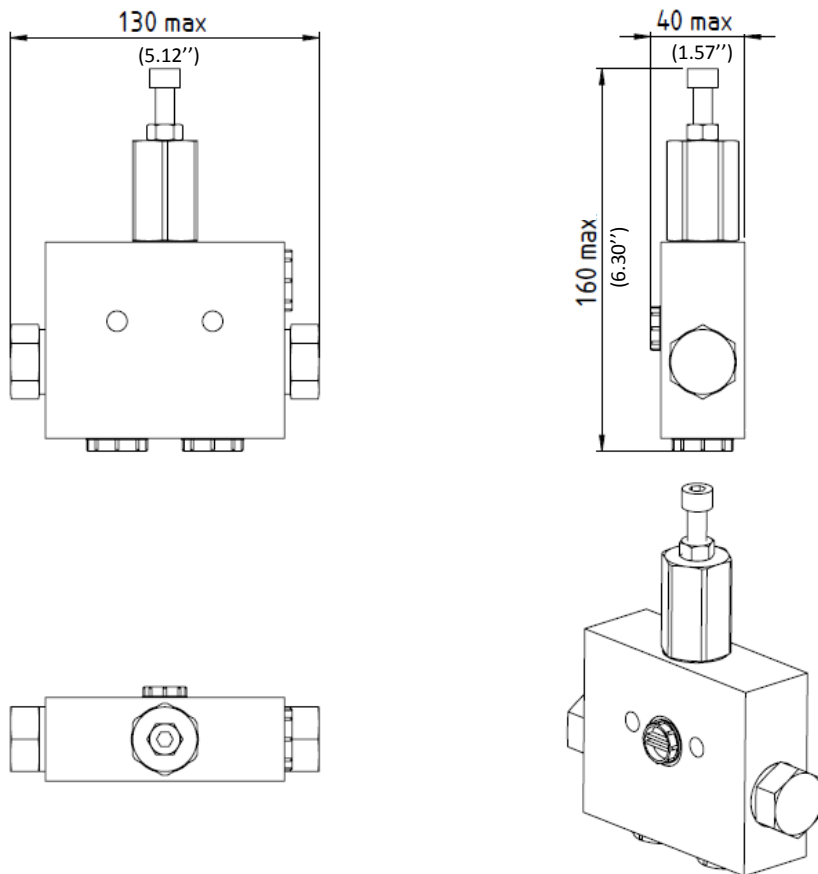
The flushing valve, also called exchange valve is used to bleed the hot oil toward a cooler in the hydrostatic transmission. As the cooled oil continuously regulates the hydraulic circuit temperature, the flushing valve operation increases the fluid quality, thus the life span of the transmission. Our FLUID-SYSTEM flushing valve can be installed on any type of hydraulic circuit. This valve is customizable and can be modified as per our customer's application type. The pressure exchange can also be adjusted to complement our customer's needs.

▷ **HYDRAULIC SCHEMATIC**



▷ **OVERALL DIMENSIONS**

Millimeter (inches)



▷ TECHNICAL SPECIFICATIONS

Exchange flow (10 bar [145 psi] ΔP)	60 l/min (15.85 gpm) with ΔP A→T or B→T
Operating pressure	480 bar (6925 psi)
Piloting pressure	8 bar (116 psi)
Maximum pressure	500 bar (7255 psi)
Pressure relief valve setting	From 8 to 30 bar (116 psi to 435 psi)
Exchange way	Forward / Reverse
Temperature	- 20°C to 80°C (32°F to 176°F)
Seals	NBR **
Ports / Thread	ISO 1179 (BSP/Gas) - ISO 11926 (UNF)
Weight	2.1 kg (4.63 lbs)
Material	Steel
Viscosity	Between 10 and 100 cSt
Pollution level	20/18/15 as per ISO 4406
Surface treatment	Phosphating

\* Values can be changed upon request to our engineering department.

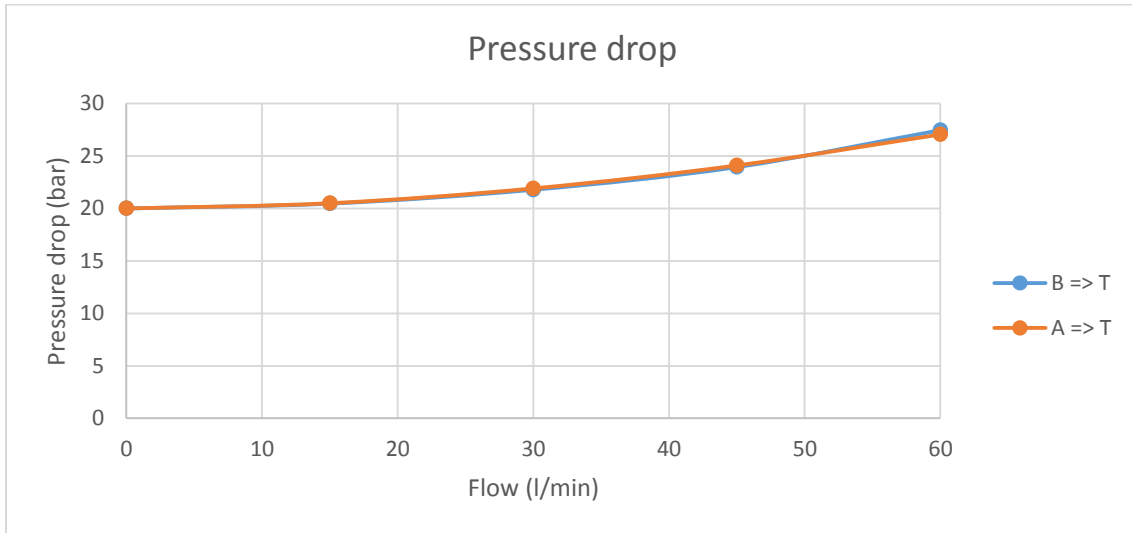
\*\* Other seals available on demand.

▷ PORT TABLE

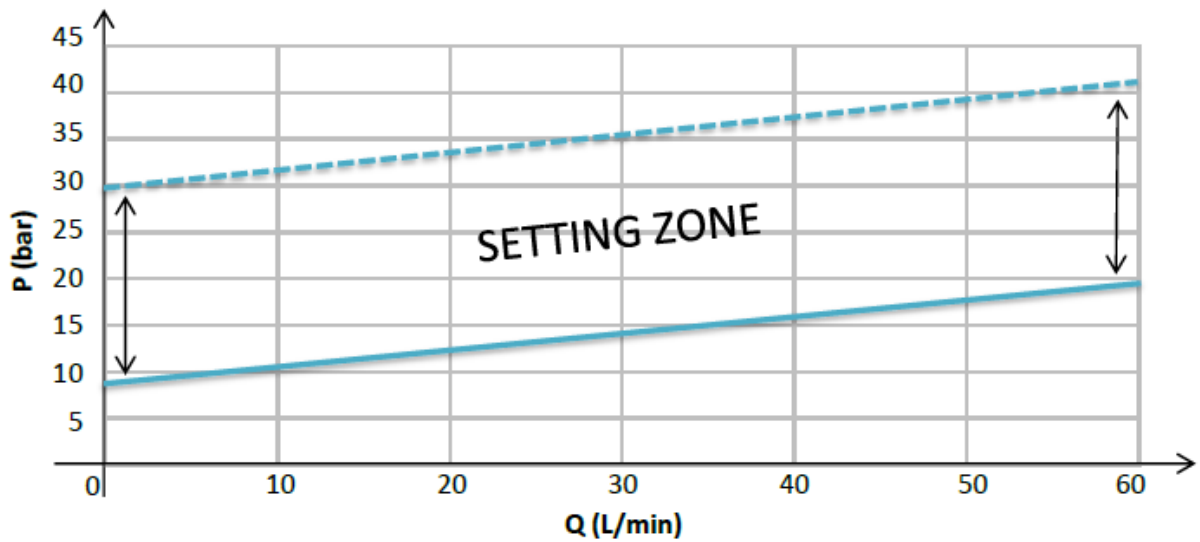
PORT	European Norm ISO 1179-1	US Norm ISO 11926-1	Protective Cap
A, B, T	1/2" BSP	7/8"-14 UNF-2B	Plastic
M	1/4" BSP	9/16" -18 UNF-2B	Plastic

▷ SPECIFICATION CURVES

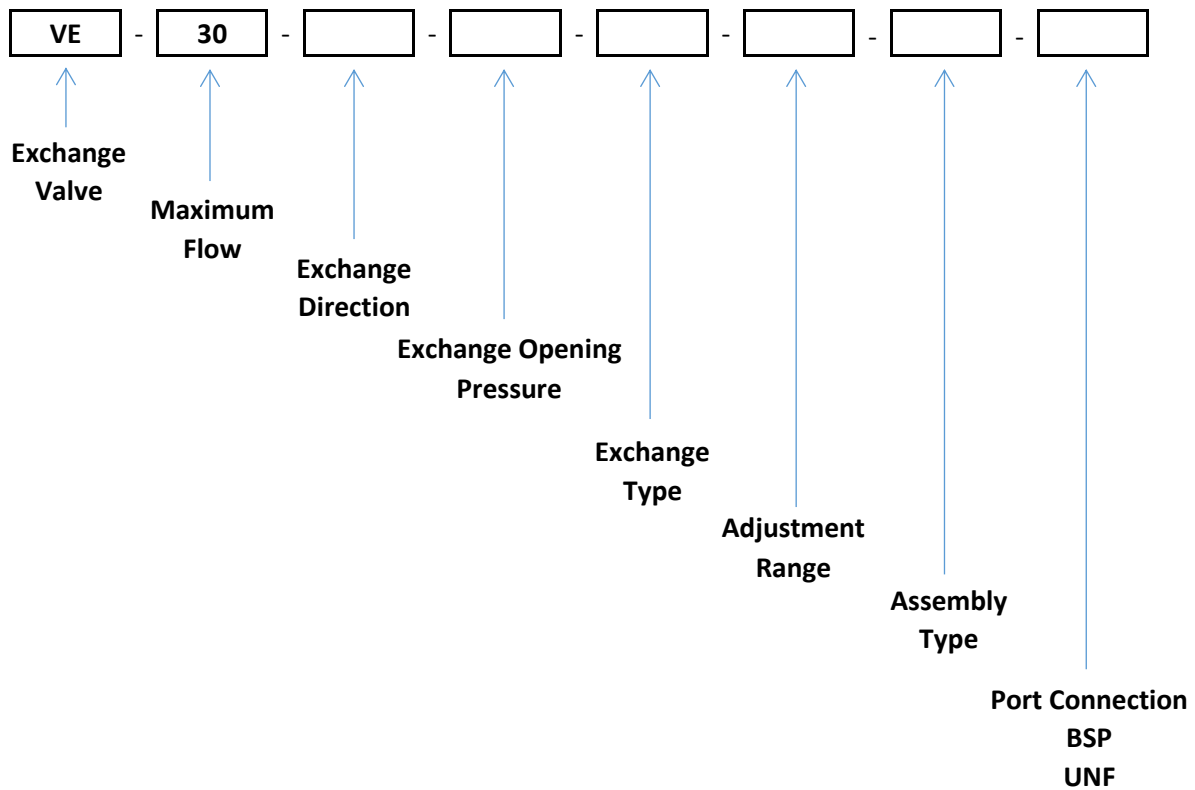
a. Pressure drop



b. Performance Curves



▷ **PRODUCT CODE**



Exchange Direction:
- <b>1</b> - Unidirectional A => T
- <b>2</b> - Unidirectional B => T
- <b>3</b> - Bidirectional

Exchange Opening Pressure:
- <b>10</b> - 10 bar [145 psi]
- <b>12</b> - 12 bar [174 psi]
- <b>14</b> - 14 bar [203 psi]
- <b>16</b> - 16 bar [232 psi]
- <b>18</b> - 18 bar [261 psi]
- <b>20</b> - 20 bar [290 psi]
- <b>22</b> - 22 bar [319 psi]
- <b>24</b> - 24 bar [348 psi]
- <b>26</b> - 26 bar [377 psi]
- <b>28</b> - 28 bar [406 psi]
- <b>30</b> - 30 bar [435 psi]

Exchange Type
- <b>0</b> - Nonadjustable relief valve
- <b>A</b> - Adjustable relief valve

Adjustment Range
- <b>1020</b> - Low range: 10 to 20 bar [145 to 290 psi]
- <b>2030</b> - High range: 20 to 30 bar [290 to 435 psi]

Assembly Type
- <b>1</b> - Piped valve + necessary port
- <b>6</b> - Flanged valve (A, B, T)

Port Connection
- <b>BSP</b>
- <b>UNF</b>