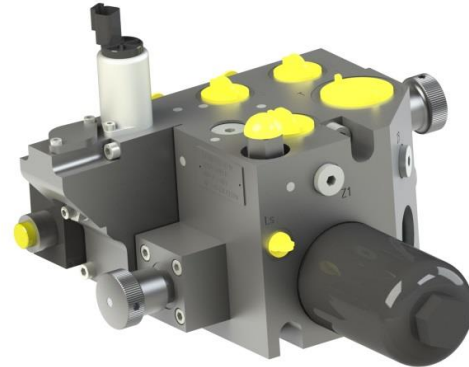


SPREADER CONTROL VALVE

- Up to 250 bar (3626 psi)
- Inlet flow 150 l/min (39,6 gpm)
- Regulated flow 100 l/mn



Specifications are subject to change without notice.

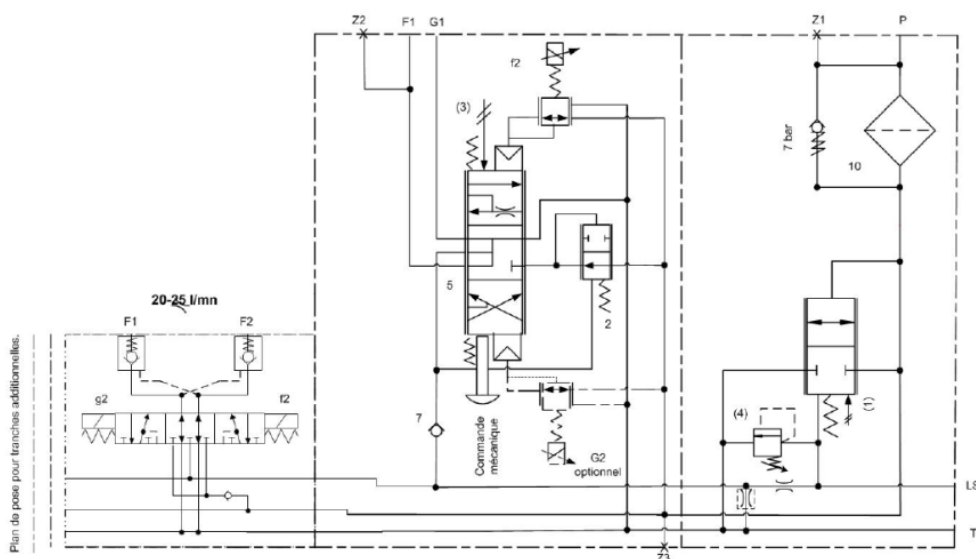
DESCRIPTION

The spreader control valve manages the regulation of the conveyor floor function and the back hood opening. It can be used with LS pump.

Application:



HYDRAULIC SCHEMATIC



▷ **OVERALL DIMENSIONS**

Millimeter

